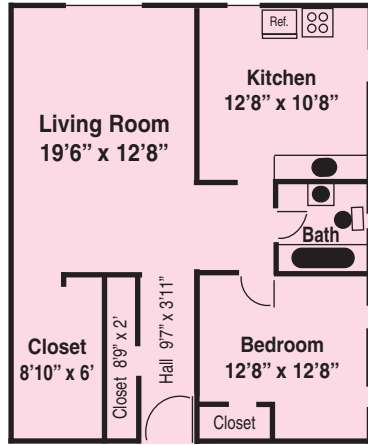
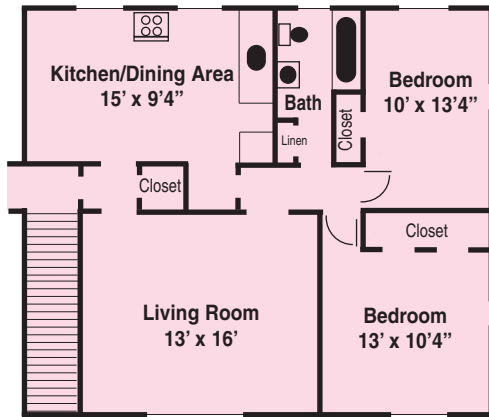


## Typical Large One-Bedroom



## Typical Two-Bedroom



Consider the unique offerings designed to satisfy your needs and desires.

- lovely landscaping in a park-like setting
- heat included
- one and two-bedroom units in a wide variety of sizes
- wall-to-wall carpeting throughout each unit
- generous closet space
- eat-in kitchen with ceiling fan
- cable ready
- attractive window treatments
- convenient laundry facilities
- private parking near your apartment or your own garage

At Troy Garden Apartments, you're within walking distance of so much

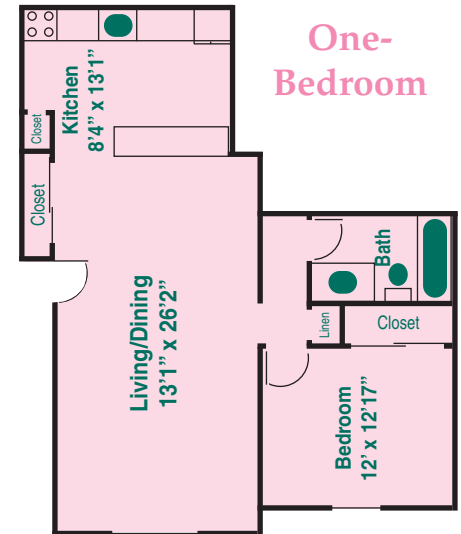
- Samaritan and St. Mary's Hospitals
- public and private schools, and RPI
- restaurants and entertainment
- a shopping plaza and many stores
- churches and a terrific YMCA
- Frear Park and Municipal Golf Course

**Troy Garden**  
APARTMENTS

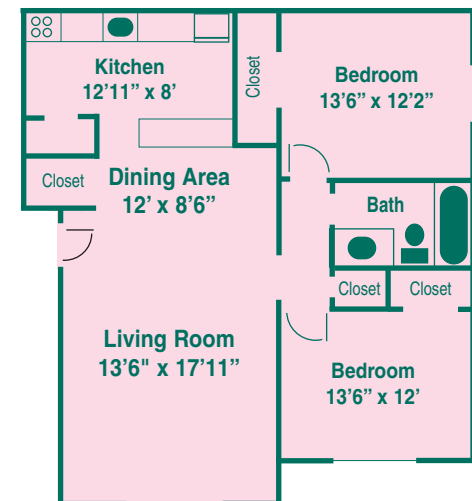
Living life to the fullest

Newest additions feature:

- GE appliances
- air conditioning
- laundry room in each building
- intercom entry system for your privacy and convenience
- energy efficient
- carpeted
- beautifully landscaped
- quiet residential section of Troy and Brunswick area
- on bus line
- walk to shopping
- walk to YMCA
- near hospitals
- garages available
- cable available



One-Bedroom



Two-Bedroom